



## **MiFarm**

# Exporting field boundaries from GateKeeper

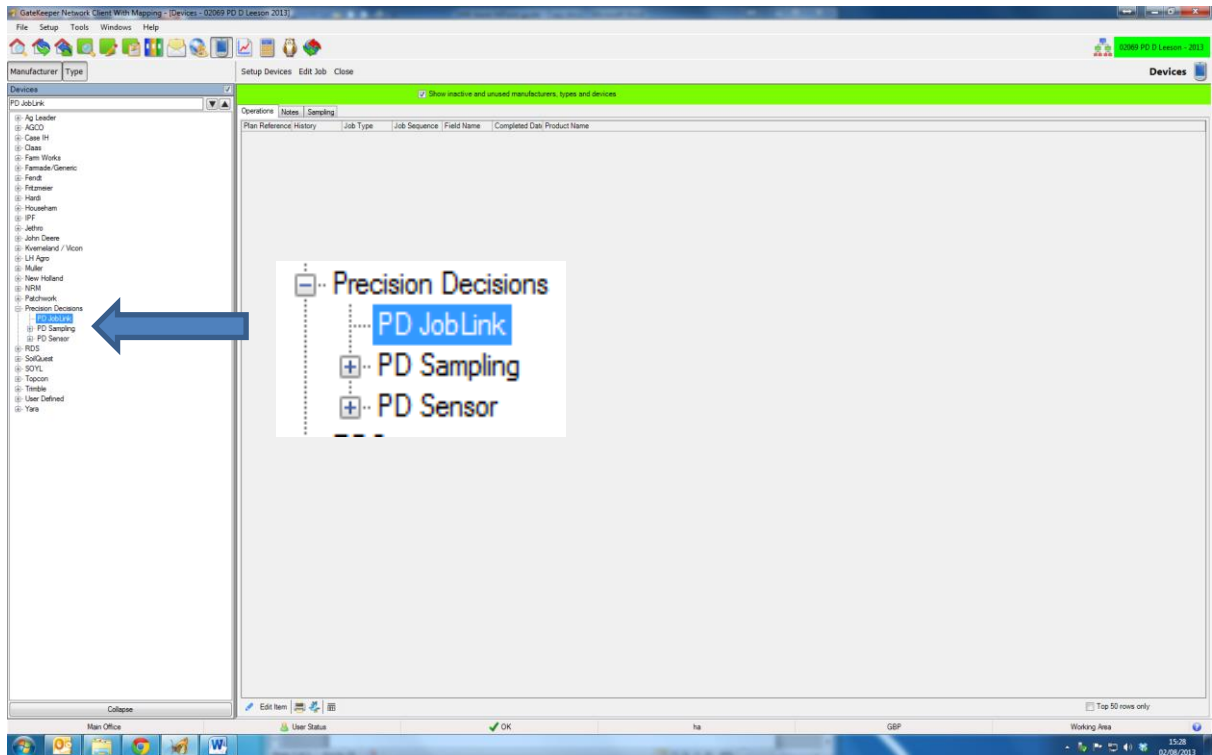
Please note before beginning

MiFarm runs with optimum functionality when Google Chrome is used.

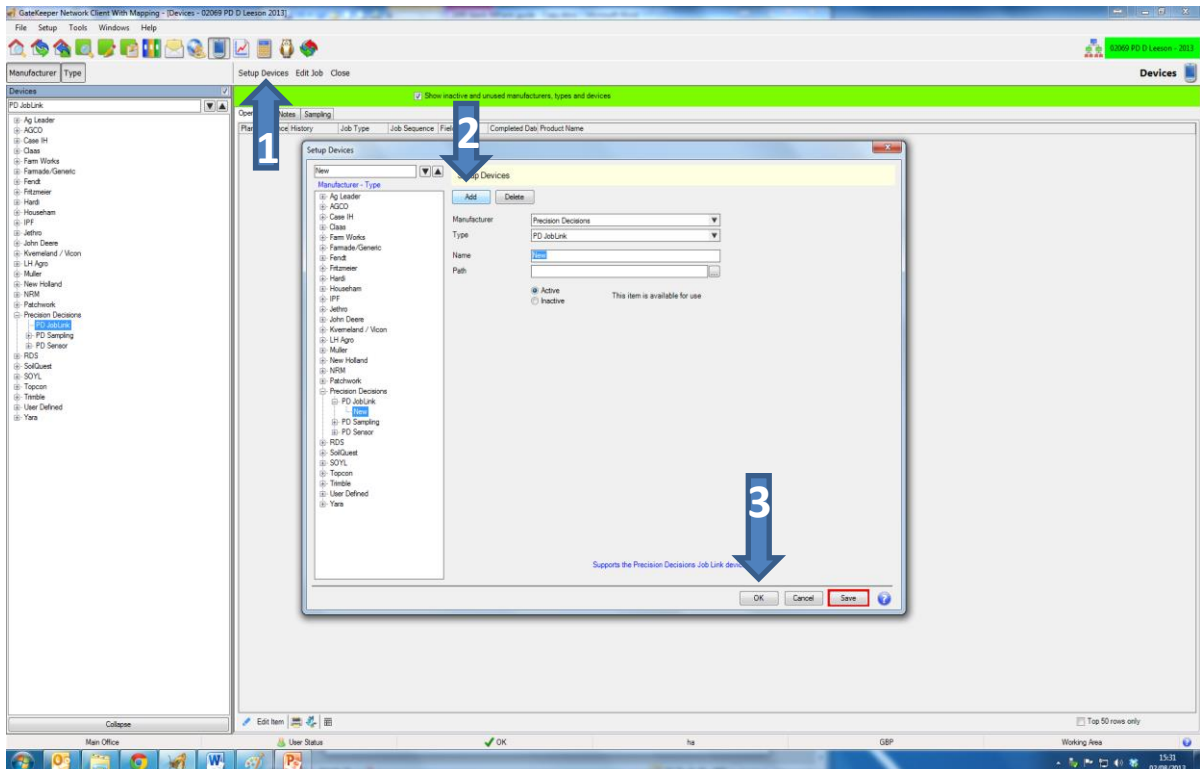
We strongly recommend using Chrome as your web browser when accessing MiFarm for the best performance of the programme.

## To export field boundaries from GateKeeper into MiFarm:

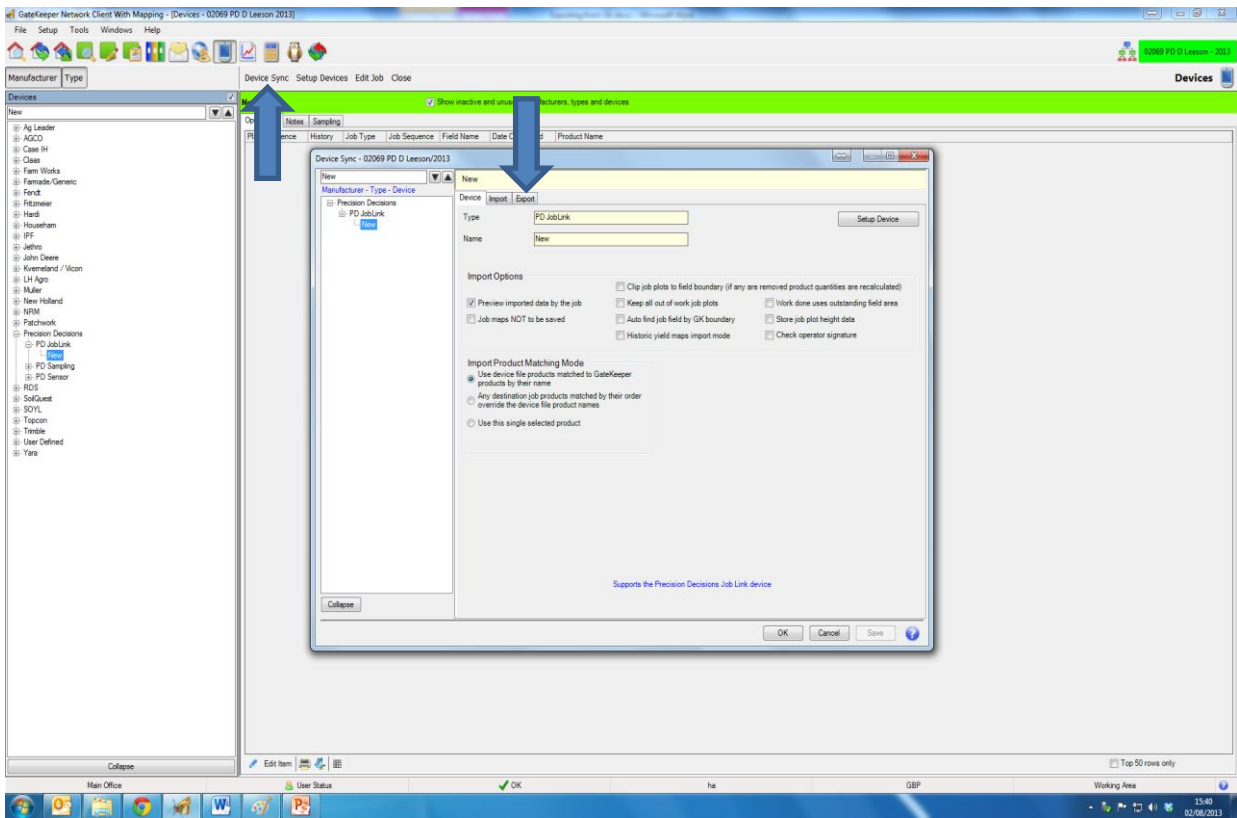
In GateKeeper, go to the devices screen, and select Precision Decisions 'PD Joblink'



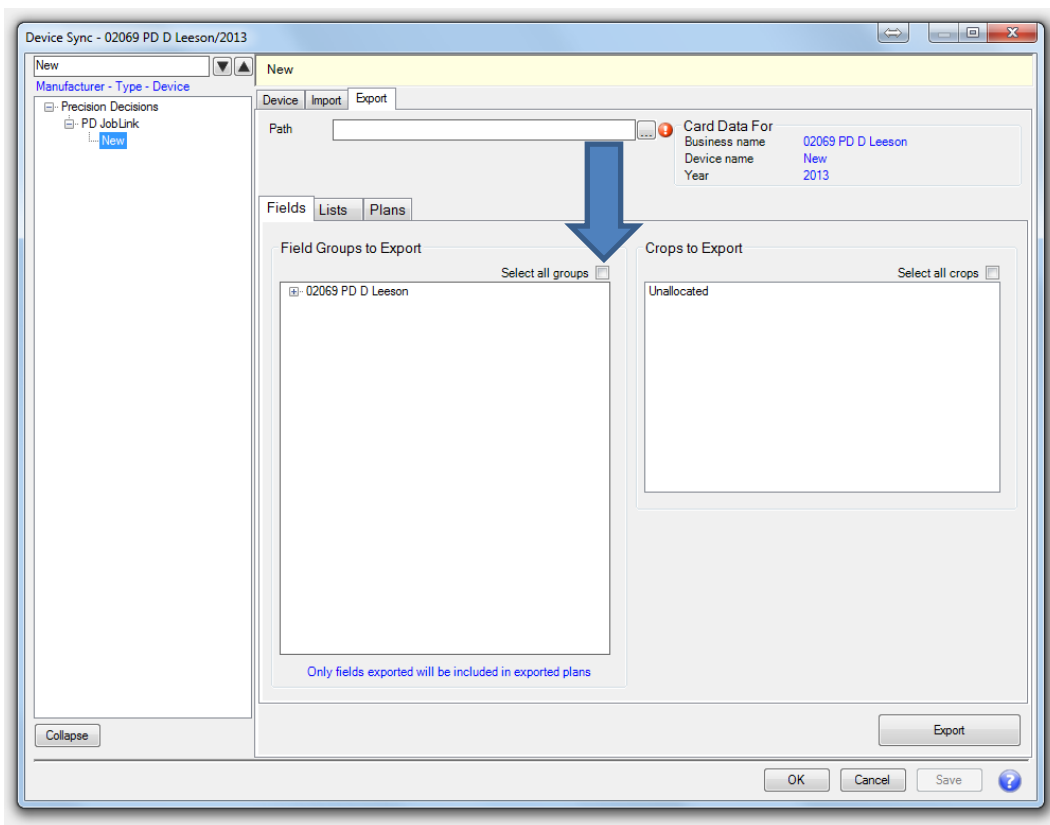
Use 'Setup Devices' to create a new device under 'PD Joblink'



Select 'Device Sync', and in the pop-up screen, go to the 'Export' tab:



Select the 'Fields' tab, and tick 'Select all groups' under 'Field Groups to Export'



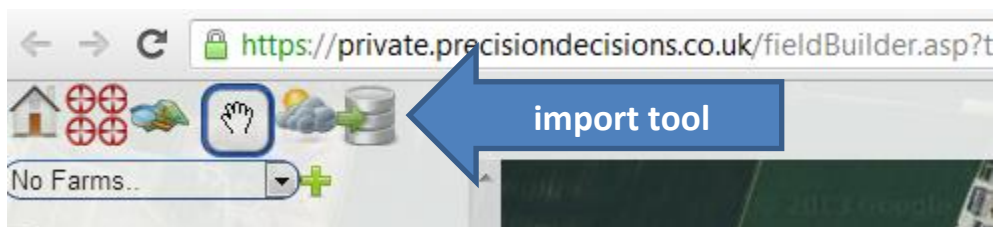
In the 'Path' box, select a place to temporarily save the file this process will produce – for example, on the desktop. Then hit the 'Export button'.

GateKeeper will have exported a file to your selected location called 'Resource.GKX'. Importing this file into MiFarm will bring your field boundaries into MiFarm for you.

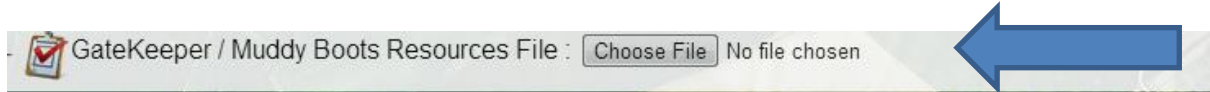
### To import boundaries into MiFarm:

Log in to MiFarm using the login details provided.

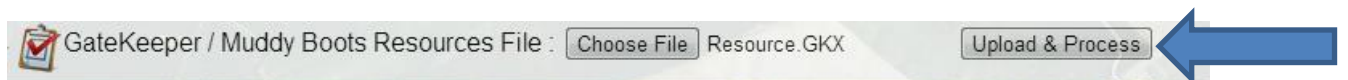
You will need to create a farm, as detailed in the MiFarm user guide. Next, select the import tool from the toolbar:



Select 'Choose File' from the options which appear.



Navigate to choose the file 'Resource.GKX' exported from GateKeeper, and then select 'Upload and Process'.



A screen will appear with the details of fields successfully uploaded. Use the back arrow in your browser to go back to your MiFarm home page. If you now select your farm from the dropdown menu, the fields should have successfully been added to MiFarm.